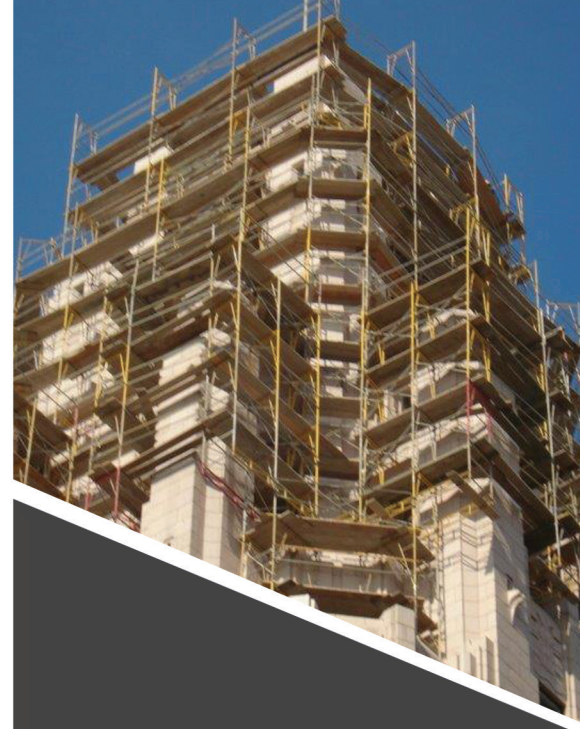




CSSI

COMMERCIAL SCAFFOLDING SALES INCORPORATED



product catalog



310-324-7622 | fax 310-324-7644



CSSI

COMMERCIAL SCAFFOLDING SALES INCORPORATED

about us

Founded in 1998, Commercial Scaffolding Sales, Inc. (CSSI) has quickly established itself as the premier source of scaffold products for North American markets. CSSI carries a large inventory of plank, frames, bracing and accessories. Our equipment is manufactured with only the best raw materials, and all of our products meet OSHA standards. Whether it's exterior or interior work, we can deliver the materials to get the job done safely...often the same week you order!

Built on a tradition of honesty, integrity, accountability and a passion for improvement, CSSI is committed to building long-term relationships with customers by helping them to achieve competitive advantages.

If you are looking for high quality products, competitive pricing, and above all, exceptional service, you have found what you're looking for.

Let us help you find your scaffolding solutions!

our mission

To lead our industry in Quality, Value and Customer Satisfaction.



(310) 324-7622
(888) 363-3697



FRAMES	4
Snap-On Frames	4
Flip Lock Frames	6
Drop Lock Frames	7
Rolling Towers	8

COMPONENTS	9
Access	9
Brackets	11
Casters	12
Clamps	12
Clips & Pins	12
Coupling Pins	12
Cross Braces	10
End Rail	10
Goosers	10
Guard Rail	10
Guard Rail Posts	11
Hoists	11
Locks	12
Planks & Decks	13
Screw Jacks	11
Steel Tubing	11
Truss	11
Wire	11

ACCESSORIES	14
A-Frames	14
Carts	15
Demolition	15
Flat Backs	14
Ladders	15
Mortar Board Stands	14
Tarps	15

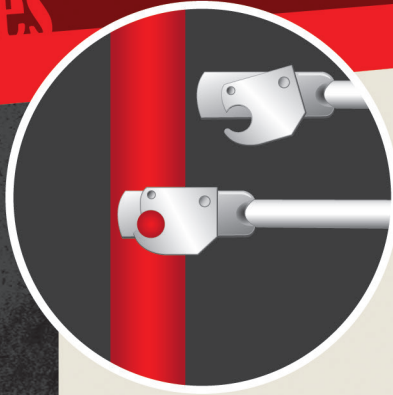
a leader in QUALITY



CSSI

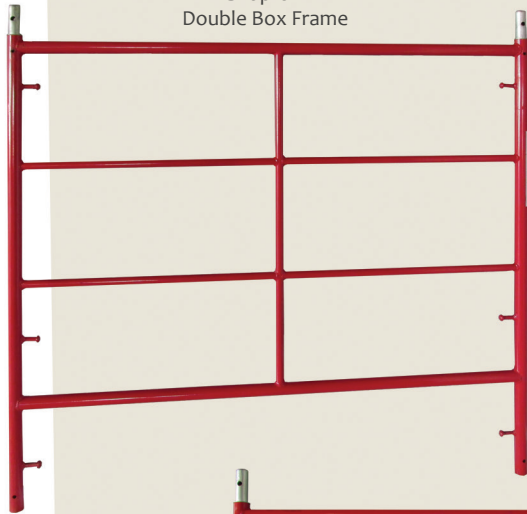
COMMERCIAL SCAFFOLDING SALES INCORPORATED

snap-on frames



Snap-On Frames are by far our most popular scaffolding.

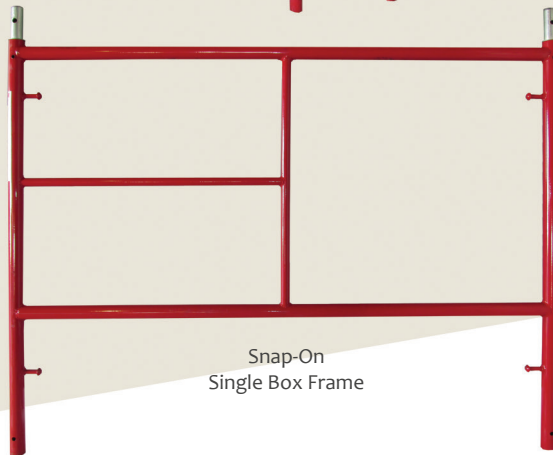
Snap-On Double Box Frame



Snap-On Box Frame



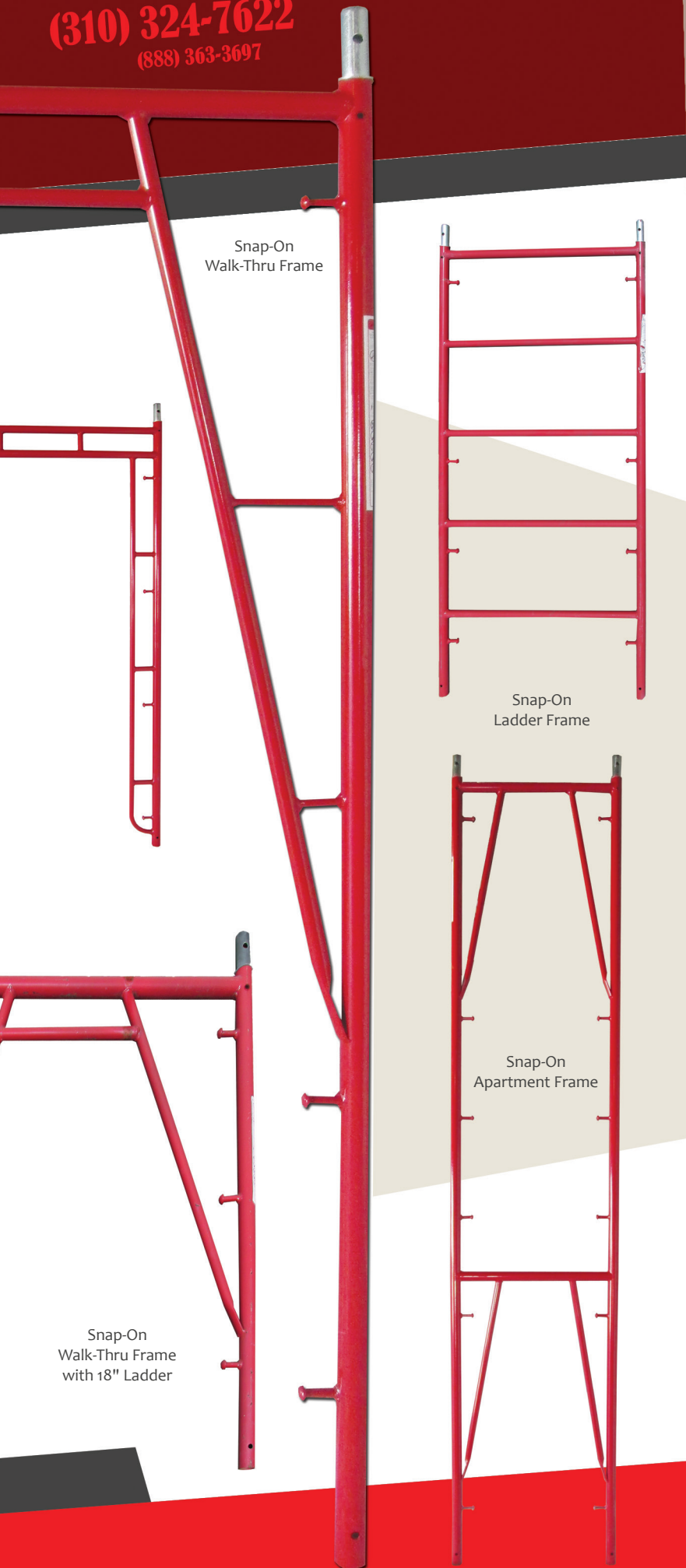
Snap-On Single Box Frame



Snap-On Canopy Frame



(310) 324-7622
(888) 363-3697



Snap-On
Walk-Thru Frame

Snap-On
Ladder Frame

Snap-On
Apartment Frame

Snap-On
Walk-Thru Frame
with 18" Ladder

SNAP-ON BOX FRAMES

Part #	Dimensions	Description	Weight*
So88	2' x 20"	Box Frame	12.90 lb
So90	2' x 40"	Box Frame	18.10 lb
So95	2' x 4'	Box Frame	20.70 lb
S100	3' x 20"	Box Frame	16.00 lb
S100-L	3' x 20"	Box Frame w/18" Ladder	21.70 lb
S102	3' x 40"	Box Frame	21.20 lb
S102-L	3' x 40"	Box Frame w/18" Ladder	30.00 lb
S105	3' x 4'	Box Frame	23.30 lb
So94	5' x 20"	Box Frame	22.20 lb
So96	5' x 40"	Box Frame	27.40 lb
S120	5' x 4'	Single Box Frame	32.90 lb
S121	5' x 4'	Double Box Frame	34.65 lb
S118	5' x 5'	Single Box Frame	38.90 lb
S124	5' x 5'	Double Box Frame	42.35 lb
S119	5' x 6'8"	Single Box Frame	47.20 lb
S122	5' x 6'8"	Double Box Frame	52.40 lb

SNAP-ON LADDER FRAMES

Part #	Dimensions	Description	Weight*
S131	2' x 6'8"	Ladder Frame	33.20 lb
S130	3' x 5'	Ladder Frame	28.60 lb
S133	3' x 6'8"	Ladder Frame	38.40 lb

SNAP-ON WALK-THRU FRAMES

Part #	Dimensions	Description	Weight*
So86	2' x 5'	Walk-Thru Frame	27.25 lb
So92	2' x 6'8"	Walk-Thru Frame	30.95 lb
S104	3' x 4'	Walk-Thru Frame	23.85 lb
S143	3' x 4'	Walk-Thru Frame w/18" Ladder	34.90 lb
S106	3' x 5'	Walk-Thru Frame	29.60 lb
S142	3' x 5'	Walk-Thru Frame w/18" Ladder	42.95 lb
S108	3' x 6'8"	Walk-Thru Frame	35.20 lb
S144	3' x 6'8"	Walk-Thru Frame w/18" Ladder	52.00 lb
S141	3' x 8'8"	Walk-Thru Frame w/18" Ladder	67.50 lb
S146	3' x 10'8"	Walk-Thru Frame w/18" Ladder	79.80 lb
S148	3' x 11'8"	Walk-Thru Frame w/18" Ladder	85.70 lb
So98	5' x 6'8"	Walk-Thru Frame	42.70 lb

SNAP-ON CANOPY FRAMES

Part #	Dimensions	Description	Weight*
S128	5' x 7'6"	Canopy Frame	52.90 lb

SNAP-ON APARTMENT FRAMES

Part #	Dimensions	Description	Weight*
So90.5	2' x 7'8"	Apartment Frame	38.42 lb
So91	2' x 8'8"	Apartment Frame	41.00 lb
So93	2' x 10'8"	Apartment Frame	50.00 lb
S109	3' x 7'8"	Apartment Frame	43.70 lb
S110	3' x 8'8"	Apartment Frame	45.50 lb
S112	3' x 10'8"	Apartment Frame	53.70 lb
S114	3' x 11'8"	Apartment Frame	57.00 lb

* Weights may vary by 5%.



CSSI

COMMERCIAL SCAFFOLDING SALES INCORPORATED

flip lock frames



FLIP LOCK BOX FRAMES

Part #	Dimensions	Description	Weight*
WS2040	5' x 4'1"	Single Box Frame	33.40 lb
WS2050	5' x 5'1"	Single Box Frame	39.00 lb
WS2051	5' x 5'1"	Double Box Frame	42.50 lb
WS2060	5' x 6'7"	Single Box Frame	44.50 lb
WS2061	5' x 6'7"	Double Box Frame	48.00 lb

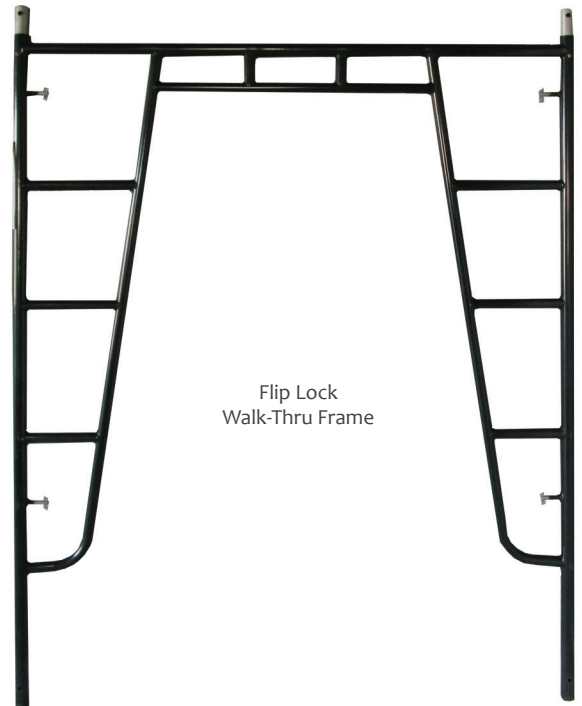
FLIP LOCK LADDER FRAMES

Part #	Dimensions	Description	Weight*
WS2020	3' x 6'7"	Ladder Frame	35.60 lb

FLIP LOCK WALK-THRU FRAMES

Part #	Dimensions	Description	Weight*
WS2010	3' x 6'7"	Walk-Thru Frame	37.70 lb
WS2080	5' x 6'7"	Walk-Thru Frame	47.80 lb

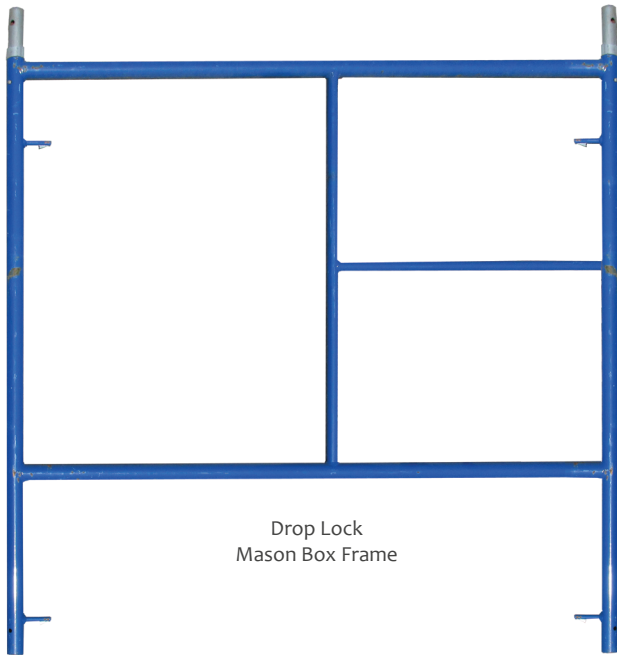
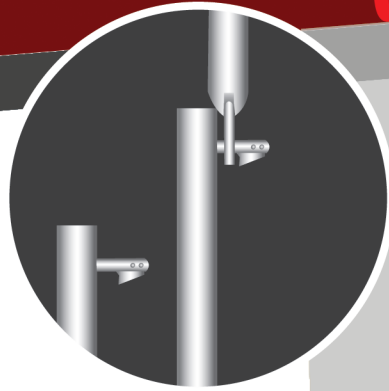
* Weights may vary by 5%.



Flip Lock
Walk-Thru Frame

(310) 324-7622
(888) 363-3697

drop lock frames



Drop Lock
Mason Box Frame

Coupling pins are not included with Drop Lock Frames.

DROP LOCK BOX FRAMES

Part #	Dimensions	Description	Weight*
SI-MF4-L3	5' x 4'	Mason Box Frame	32.95 lb
SI-MF5-L3	5' x 5'	Mason Box Frame	36.70 lb
SI-MF6-L3	5' x 6'4"	Mason Box Frame	43.80 lb

DROP LOCK WALK-THRU FRAMES

Part #	Dimensions	Description	Weight*
TF5H-3W-L3	3' x 5'	Walk-Thru Frame	33.60 lb
TF6H-3W-L3	3' x 6'4"	Walk-Thru Frame	39.80 lb
TF6H-5W-L3	5' x 6'4"	Walk-Thru Frame	45.00 lb

DROP LOCK CANOPY FRAMES

Part #	Dimensions	Description	Weight*
S129	5' x 7'6"	Canopy Frame	53.00 lb

* Weights may vary by 5%.





CSSI

COMMERCIAL SCAFFOLDING SALES INCORPORATED

rolling towers

ROLLING TOWERS

Part #	Dimensions	Description	Weight*
MFS-6	6'	Multi-Purpose Scaffold Unit w/Casters	146.00 lb

TOWER ACCESSORIES

Part #	Dimensions	Description	Weight*
MFG		Guard Rail Set	81.00 lb
RTO-42		Rolling Tower Outrigger Stabilizer	20.10 lb

* Weights may vary by 5%.



Rolling Tower Outrigger Stabilizer



Multi-Purpose Scaffold Unit with Casters

(310) 324-7622
(888) 363-3697

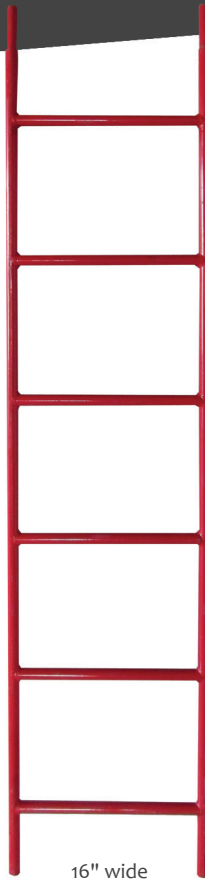
scaffold components



Adjustable Access Gate



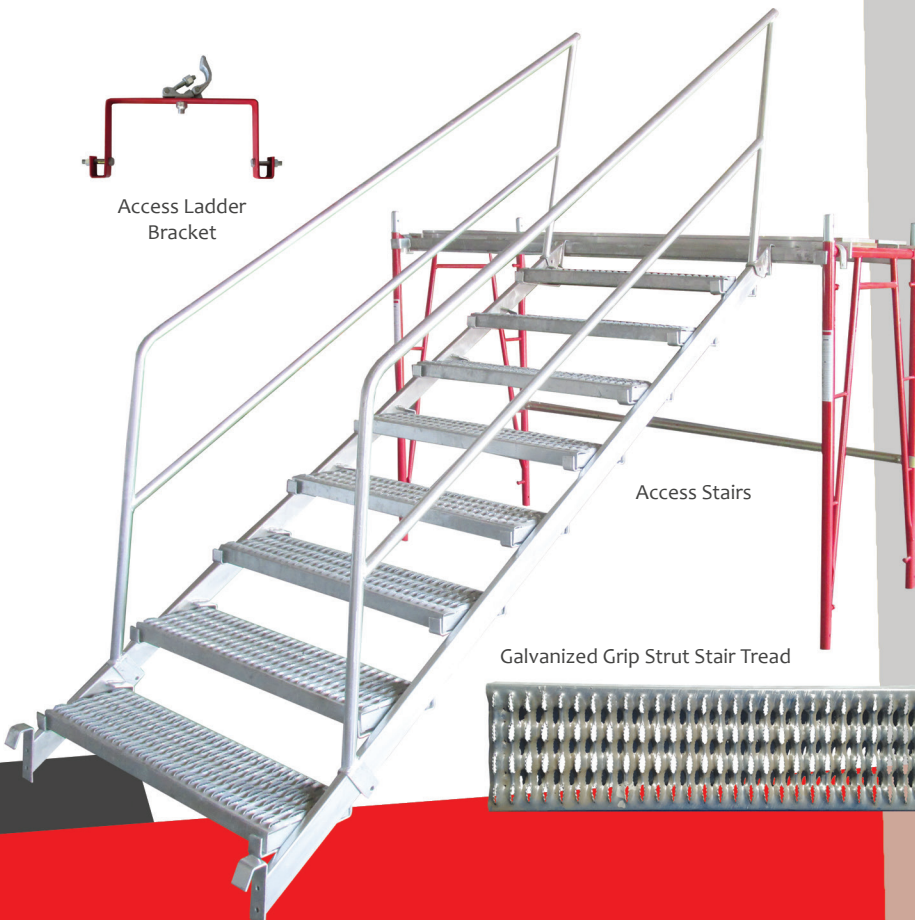
2' wide
Access Ladder



16" wide
Access Ladder

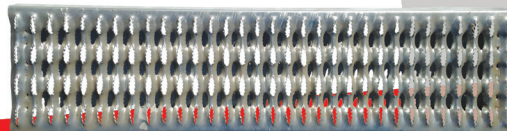


Access Ladder
Bracket



Access Stairs

Galvanized Grip Strut Stair Tread



ACCESS GATES

Part #	Dimensions	Description	Weight*
SAG		Access Gate	23.90 lb
SAG-1	3' to 5'	Adjustable Access Gate	27.85 lb

ACCESS LADDERS

Part #	Dimensions	Description	Weight*
S903	2' x 3'	Steel Access Ladder	14.75 lb
S901	2' x 6'	Steel Access Ladder	28.15 lb
S902	2' x 9'	Steel Access Ladder	41.50 lb
S908	3' x 16"	Access Ladder	9.30 lb
S906	6' x 16"	Access Ladder	16.35 lb
S905		Access Ladder Bracket	5.50 lb

ACCESS STAIRS

Part #	Dimensions	Description	Weight*
S995	5'	Section Access Stairs (8 rungs)	280.00 lb
S993	6'8"	Section Access Stairs (9 rungs)	308.00 lb
S996	5'	Hand Rails for Access Stairs	34.00 lb
S995.5	6'8"	Hand Rails for Access Stairs	46.30 lb
S991	9.5" x 36"	Galvanized Grip Strut Stair Tread (small holes)	14.90 lb

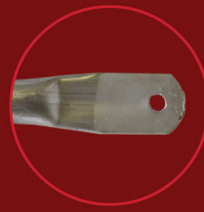
* Weights may vary by 5%.



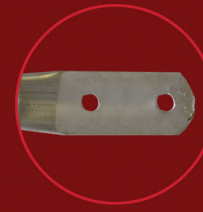


CSSI

COMMERCIAL SCAFFOLDING SALES INCORPORATED



Punched Hole



Double Punched Hole



Snap-On

scaffold components

CROSS BRACES

Part #	Dimensions	Description	Weight*
S159	5' x 32"	Snap-On Cross Brace	9.80 lb
S158	5' x 48"	Snap-On Cross Brace	10.90 lb
S155	7' x 12"	Snap-On Cross Brace	11.85 lb
S205	7' x 24"	Snap-On Cross Brace	11.40 lb
S165	7' x 32"	Snap-On Cross Brace	12.45 lb
S164	7' x 48"	Snap-On Cross Brace	13.25 lb
S157	10' x 12"	Snap-On Cross Brace	16.10 lb
S170.5	10' x 24"	Snap-On Cross Brace (orange flags)	16.35 lb
S171	10' x 32"	Snap-On Cross Brace (red flags)	16.55 lb
S170	10' x 48"	Snap-On Cross Brace	17.16 lb
WS2115	10' x 2'	Punched Hole Cross Brace	17.00 lb
S208	10' x 24"	Punched Hole Cross Brace (orange flags)	15.10 lb
S172	10' x 48"	Punched Hole Cross Brace	15.90 lb
WS2090	4' x 3' x 4'	Double Punched Hole Cross Brace	10.50 lb
WS2092	5' x 3' x 4'	Double Punched Hole Cross Brace	11.50 lb
WS2094	6' x 3' x 4'	Double Punched Hole Cross Brace	12.50 lb
WS2100	7' x 3' x 4'	Double Punched Hole Cross Brace	12.05 lb
WS2102	8' x 3' x 4'	Double Punched Hole Cross Brace	13.95 lb
WS2110	10' x 3' x 4'	Double Punched Hole Cross Brace	15.95 lb
WS2120	5' x 3' x 4'	Angle Iron Double Punched Hole Cross Brace	9.65 lb

GUARD RAIL

Part #	Dimensions	Description	Weight*
S149	3'	Punched Hole Guard Rail	2.95 lb
S151	5'	Punched Hole Guard Rail	4.80 lb
S161	7'	Punched Hole Guard Rail	5.60 lb
S167	10'	Punched Hole Guard Rail	10.35 lb
S176	2'	Snap-On Guard Rail	2.85 lb
S150	3'	Snap-On Guard Rail	3.72 lb
S154	5'	Snap-On Guard Rail	5.55 lb
S160	7'	Snap-On Guard Rail	7.40 lb
S166	10'	Snap-On Guard Rail	11.20 lb

END RAIL

Part #	Dimensions	Description	Weight*
S410.5	2'	Hooked End Rail	2.00 lb
S410	30"	Hooked End Rail	2.16 lb
S411	2'	Ledger Bar (Half Rung)	2.00 lb
S408	3'	Ledger Bar (Half Rung)	3.60 lb

GOOSERS

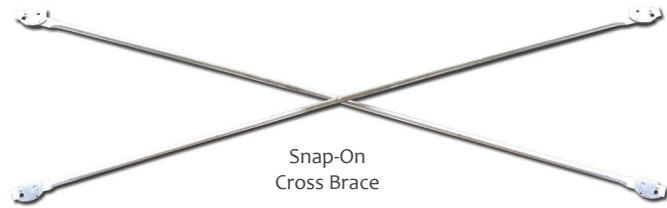
Part #	Dimensions	Description	Weight*
S177	2'	Horizontal Goosener	4.96 lb
S152	3'	Horizontal Goosener	5.98 lb
S152.5	4'	Horizontal Goosener	7.00 lb
S156	5'	Horizontal Goosener	8.00 lb
S162	7'	Horizontal Goosener	10.02 lb
S168	10'	Horizontal Goosener	13.08 lb
S168HD	10'	Heavy Duty Horizontal Goosener	18.68 lb
S172.5	7' x 3'	Diagonal Goosener	10.68 lb
S173	7' x 5'	Diagonal Goosener	11.65 lb
S168.5	10' x 3'	Diagonal Goosener	13.95 lb
S169	10' x 5'	Diagonal Goosener	14.30 lb
S179		Goosener Slide	1.25 lb



Punched Hole Cross Brace



Double Punched Hole Cross Brace



Snap-On Cross Brace



Punched Hole Guard Rail



Snap-On Guard Rail



Ledger Bar

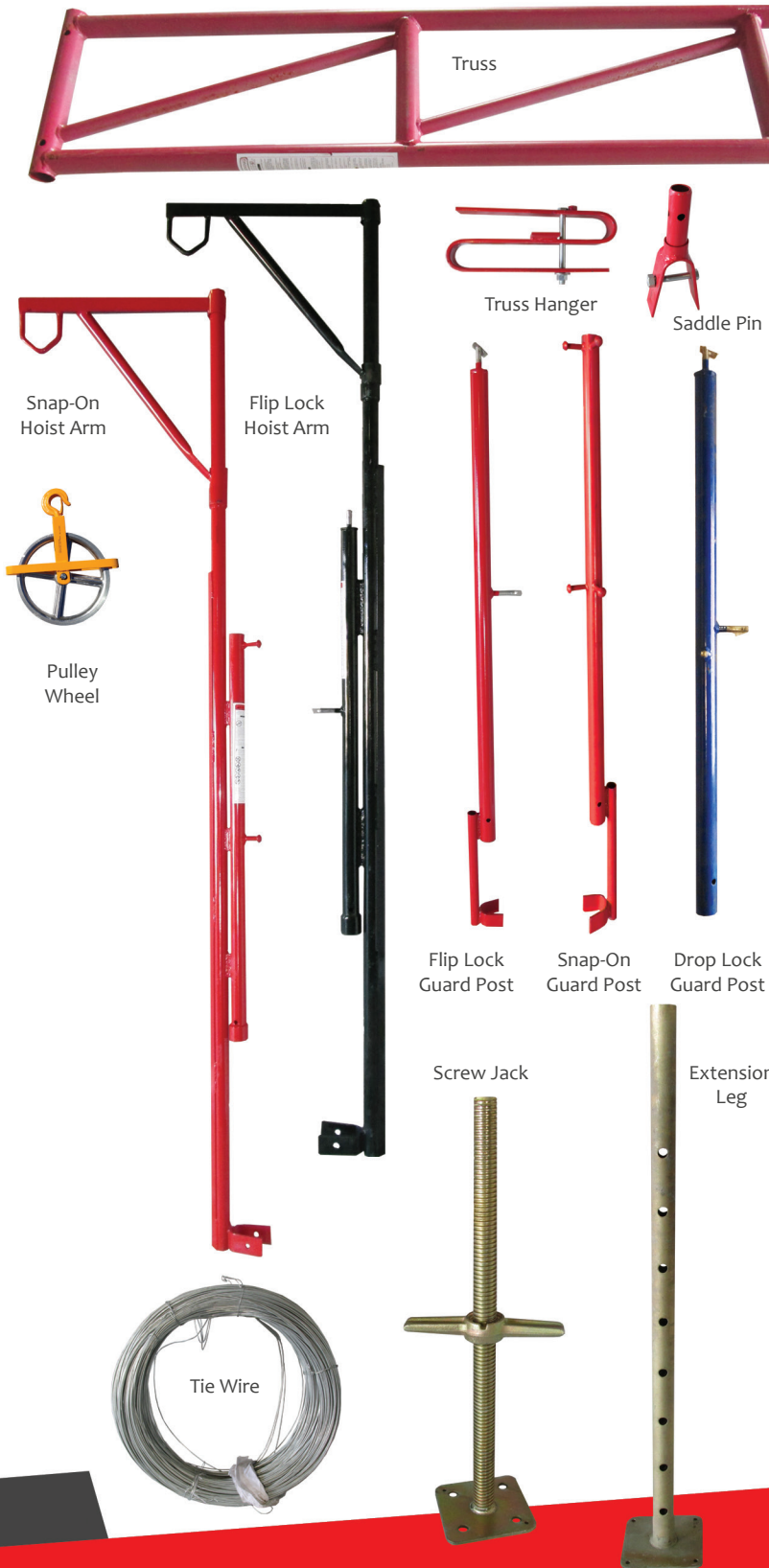


Hooked End Rail



Goosener

* Weights may vary by 5%.



TRUSS

Part #	Dimensions	Description	Weight*
S404	4"	Saddle Pin	1.50 lb
S409	10"	Saddle Pin	2.18 lb
S466	12"	Truss Hanger (S type)	8.15 lb
S450	12' x 12"	Truss	54.65 lb
S452	16' x 12"	Truss	72.30 lb
S454	20' x 12"	Truss	93.20 lb
S458	22' x 12"	Truss	98.80 lb
S460	24' x 12"	Truss	108.00 lb

BRACKETS

Part #	Dimensions	Description	Weight*
S300	12"	Side Bracket w/Coupling	7.00 lb
S302	20"	Side Bracket w/Pin	10.60 lb
S303	20"	Side Bracket w/Coupling	10.80 lb
S304	24"	Side Bracket w/Coupling	12.60 lb
S306	36"	Side Bracket w/Coupling	15.20 lb
S412.5		Canopy Bracket	1.26 lb

WIRE

Part #	Dimensions	Description	Weight*
S00010	12ga	Tie Wire	100.00 lb
S00011	12ga	Tie Wire Electro Galvanized	100.00 lb

HOISTS

Part #	Dimensions	Description	Weight*
S979		Flip Lock Hoist Arm	32.55 lb
S981		Snap-On Hoist Arm	32.35 lb
S982	12"	Pulley Wheel	7.60 lb

GUARD POSTS

Part #	Dimensions	Description	Weight*
SI-GRPF-L3	1.69" OD	Drop Lock Guard Rail Post Female	6.10 lb
SI-GRP-L3		Drop Lock Guard Rail Post w/Kicker	7.28 lb
S251		Flip Lock Guard Rail Post	7.50 lb
S250		Snap-On Guard Rail Post (2 Rivet)	7.58 lb
S255		Guard Rail Post w/18" Ladder	14.30 lb

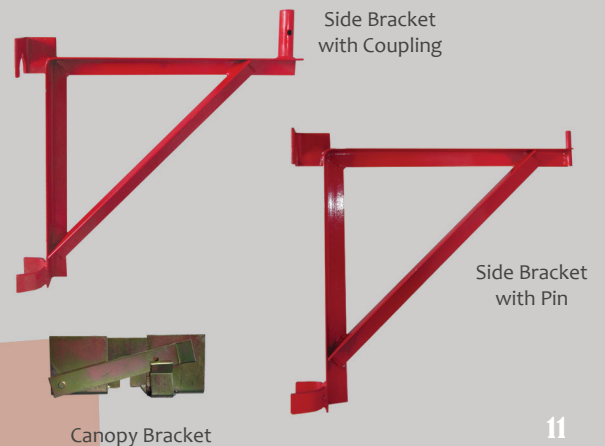
STEEL TUBING

Part #	Dimensions	Description	Weight*
S005	20'	Painted Steel Tubing (red)	1.60 lb

SCREW JACKS / EXTENSION LEGS

Part #	Dimensions	Description	Weight*
S352	24"	Screw Jack	11.90 lb
S350	24"	Extension Leg w/ Base Plate	3.95 lb

* Weights may vary by 5%.





CSSI

COMMERCIAL SCAFFOLDING SALES INCORPORATED

scaffold components

COUPLING PINS

Part #	Dimensions	Description	Weight*
S402	1 7/16" OD	Drop Lock Coupling Pin (1" collar)	1.25 lb
S399	1 5/16" OD	Flip Lock Coupling Pin (no collar)	0.54 lb
S400	1 5/16" OD	Snap-On Coupling Pin (1/8" collar)	0.58 lb
S402.5	1 3/8" OD	Coupling Pin (1" collar)	0.65 lb

CLIPS & PINS

Part #	Dimensions	Description	Weight*
S418		Spring Retainer Clip	0.04 lb
S403.5		Rivet for Snap-On Flags	0.01 lb
S403L	large	Snap-On Flag w/Pin (for rails)	0.35 lb
S403S	small	Snap-On Flag w/Pin (for braces)	0.29 lb
S405		Roll Lock Pin	0.04 lb
S412		Snap Pin	0.15 lb
S406		Gravity Lock Pin	0.22 lb
S413		Toggle Pin	0.20 lb

LOCKS

Part #	Dimensions	Description	Weight*
S419		Flip Lock Pins (box of 100)	14.32 lb
S415		Drop Lock Pins (box of 100)	12.35 lb
S414		Snap-On Rivets (box of 100)	12.12 lb

CLAMPS

Part #	Dimensions	Description	Weight*
S800		Swivel Clamp	3.96 lb
S810		Knuckle Clamp (right angle)	3.52 lb
S820		U-Clamp (side by side)	1.90 lb

CASTERS

Part #	Dimensions	Description	Weight*
S900	8"	Caster with Brake	11.60 lb

* Weights may vary by 5%.



Flip Lock Coupling Pin



Snap-On Coupling Pin



Drop Lock Coupling Pin



Spring Retainer Clip



Gravity Lock Pin



Toggle Pin



Snap-On Flag



Flip Lock Pin



Snap-On Rivet



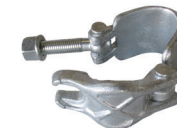
Drop Lock Pin



Swivel Clamp



Knuckle Clamp



U-Clamp



8" Caster



Standard Hook Deck



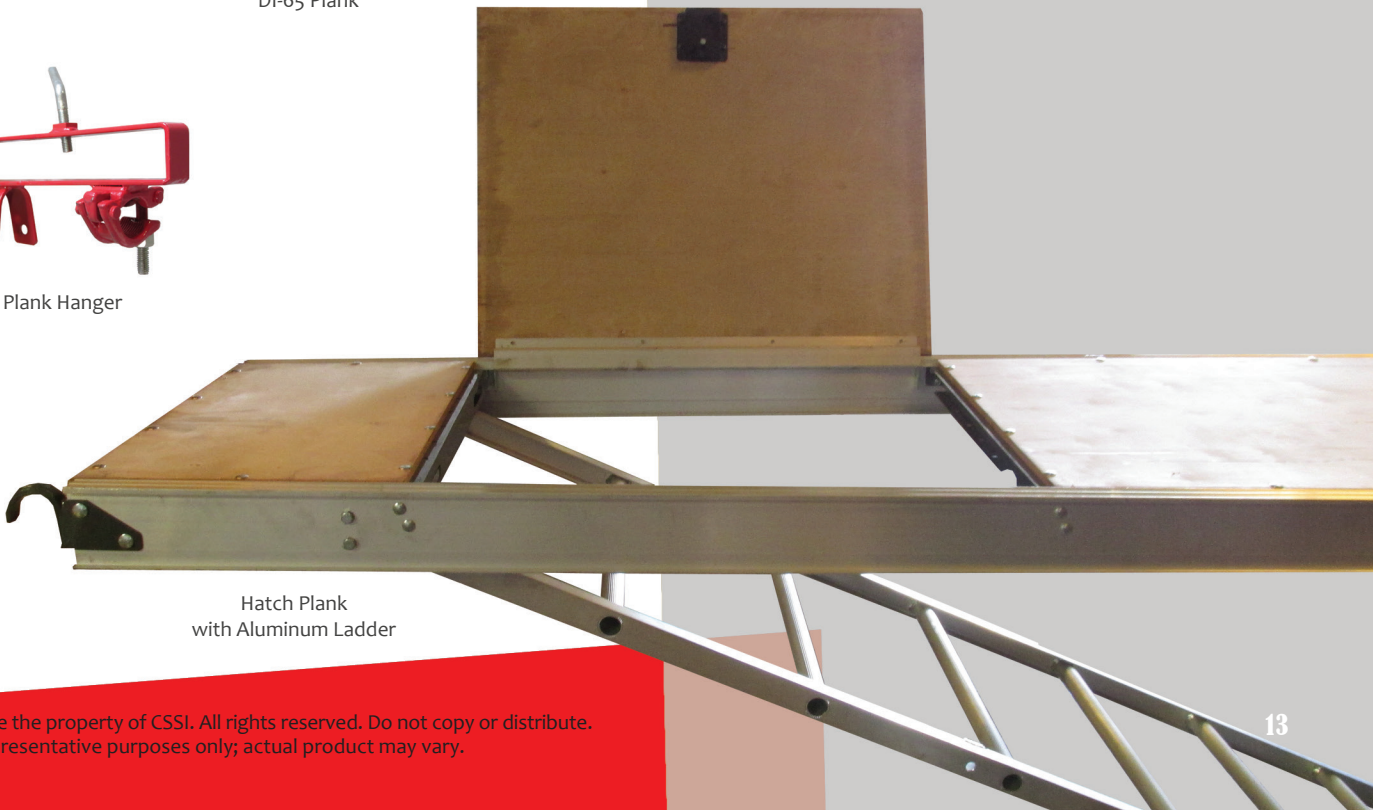
Laminated Plank



DI-65 Plank



Plank Hanger



Hatch Plank
with Aluminum Ladder

HOOK DECK

Part #	Dimensions	Description	Weight*
S723	7' x 19 1/4"	Standard Hook Deck	37.15 lb
S722	10' x 19 1/4"	Standard Hook Deck	51.25 lb
S735	7' x 30"	Aluminum Hook Deck	69.00 lb

HATCH PLANK

Part #	Dimensions	Description	Weight*
S723.5	7' x 28"	Aluminum Hatch Plank w/Aluminum Ladder	68.00 lb
S722.5	10' x 28"	Aluminum Hatch Plank w/Aluminum Ladder	85.00 lb

WOOD PLANK

Part #	Dimensions	Description	Weight*
S702	9'	DI-65 Plank, Clipped & Rodded	31.50 lb
S704	12'	DI-65 Plank, Clipped & Rodded	43.00 lb
S706	16'	DI-65 Plank, Clipped & Rodded	58.00 lb
S717.5	9'	Laminated Plank	33.75 lb
S718.5	12'	Laminated Plank	45.00 lb
S719.5	16'	Laminated Plank	60.00 lb

ALUMINUM PLANK

Part #	Dimensions	Description	Weight*
S733	7' x 19 1/4"	Aluminum Plank	29.50 lb
S732	10' x 19 1/4"	Aluminum Plank	39.65 lb

PLANK ACCESSORIES

Part #	Dimensions	Description	Weight*
S750		Plank Hanger	7.85 lb
S422		Toe Board Bracket	6.50 lb

* Weights may vary by 5%.



CSSI

COMMERCIAL SCAFFOLDING SALES INCORPORATED

accessories

A-FRAMES

Part #	Dimensions	Description	Weight*
S504	2'	Folding A-Frame	15.10 lb
S506	3'	Folding A-Frame	19.80 lb
S500	4'	Folding A-Frame	24.70 lb
S502	6'	Folding A-Frame	39.60 lb
S508	2'	Folding A-Frame Extension	10.60 lb
S510	3'	Folding A-Frame Extension	13.30 lb

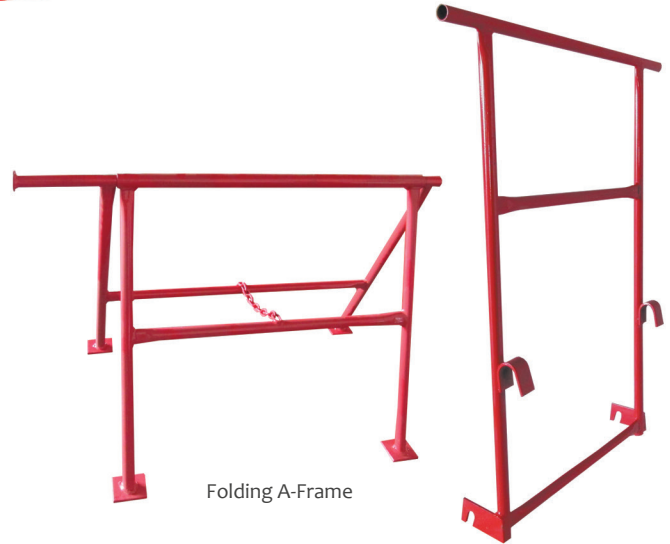
MORTAR BOARD STANDS

Part #	Dimensions	Description	Weight*
S602	20" x 30"	Mortar Board Stand	15.10 lb
S604	36" x 30"	Mortar Board Stand	20.45 lb
S606	48" x 30"	Mortar Board Stand	22.80 lb
S610	60" x 30"	Mortar Board Stand	25.30 lb
S608	72" x 30"	Mortar Board Stand	32.95 lb

FLAT BACKS & TUFFY JACKS

Part #	Dimensions	Description	Weight*
S560	18" x 10"	Flat Back (pair)	14.50 lb
S562	24" x 10"	Flat Back (pair)	17.75 lb
S564	30" x 10"	Flat Back (pair)	23.10 lb
S566	36" x 10"	Flat Back (pair)	26.65 lb
S598	24"	Tuffy Jack (pair)	28.90 lb

* Weights may vary by 5%.



Folding A-Frame

Folding A-Frame Extension



Mortar Board Stand



Tuffy Jack

Flat Back



(310) 324-7622
(888) 363-3697

accessories



Big Dawg

Mean Dawg

Puppy Dawg



Drywall Cart



Fiberglass Ladder

DEMOLITION			
Part #	Dimensions	Description	Weight*
DD1		Demo Dawg – Puppy Dawg	3.30 lb
DD2		Demo Dawg – Mean Dawg	7.20 lb
DD3		Demo Dawg – Big Dawg	9.00 lb
CARTS			
Part #	Dimensions	Description	Weight*
CS-10		Drywall Cart – 4 swivel tires	68.00 lb
LADDERS			
Part #	Dimensions	Description	Weight*
B-Ladder 6' 6"	6'	Fiberglass Ladder	25.00 lb
TARPS			
Part #	Dimensions	Description	Weight*
B00010 B	20' x 50'	Tarp (black)	20.00 lb
B00010 G	20' x 50'	Tarp (green)	20.00 lb

* Weights may vary by 5%.





CSSI

COMMERCIAL SCAFFOLDING SALES INCORPORATED

1520 W. 139 Street

Gardena, CA 90249

310-324-7622

888-363-3697

fax 310-324-7644

cssica.com